



NATA LIGHTING CO.,LTD.  
www.nata.cn  
Email:info@nata.com  
Tel:+86-750-3770000 Fax:+86-750-3771111  
Address:380JinOu Road,GaoXin Zone,Jiang Men City,Guangdong,China

NT

Client:

LumCAT: 2-2689-L

Luminaire: 92.70.412.00

Report No: 2024320-B014

Ballast type: AC

Test No: 2024320-C014

Voltage(V): 35.160

LampCAT: Fortimo\_SLM\_C\_1205

Current(A): 0.451

Lamp flux(lm): 2717.0

Power (W): 15.857

Number of Lamps: 1

PF: 0.000

Length(mm): 0

Width(mm): 0

Phm Type: C

Height(mm): 0

### Photometric Results

Lumens(lm): 2243.87, Efficiency(%): 82.59% , Luminous Efficacy(lm/W): 141.51

Central intensity(cd): 4114.922, Maximum intensity(cd): 4114.922

Angle of maximum intensity: C=0.0  $\gamma$ =0.0

Beam Angle(50%Imax): [C0/180]Total=43.8

[C90/270]Total=43.8

Field angle(10%Imax): [C0/180]Total=67.0

[C90/270]Total=67.0

Maximum s/h(1/2): C0\_180=0.70 C90\_270=0.70

Maximum s/h(1/4): C0\_180=0.68 C90\_270=0.68

Up flux rate of lamp(%): 0.00%

Down flux rate of lamp(%): 82.59%

Up flux rate of LUM(%): - -

Down flux rate of LUM(%): 100.00%

CIE Type : Direct lighting

Output flux ratio in  $\pi$  solid angle : 97.861%

Equipment: GMS1980  
Temperature(°C): 25.0

Date: 2024/3/20  
Humidity(%): 60.0%

Operator: NT07  
Distance(m): 7.65

$\gamma(^{\circ})$	Average I(cd)	Zonal F(lm)	Sum F(lm)	Eff Flux(%)	Eff Sum(%)
0.0	4114.922	0.000	0	0.00%	0.00%
1.0	4113.751	3.937	3.937	0.14%	0.18%
2.0	4107.753	11.800	15.738	0.43%	0.70%
3.0	4093.781	19.615	35.353	0.72%	1.58%
4.0	4068.908	27.323	62.676	1.01%	2.79%
5.0	4033.502	34.856	97.532	1.28%	4.35%
6.0	3980.686	42.117	139.649	1.55%	6.22%
7.0	3915.799	49.013	188.662	1.80%	8.41%
8.0	3842.792	55.527	244.189	2.04%	10.88%
9.0	3762.616	61.638	305.827	2.27%	13.63%
10.0	3657.715	67.151	372.978	2.47%	16.62%
11.0	3553.325	72.053	445.031	2.65%	19.83%
12.0	3431.160	76.350	521.382	2.81%	23.24%
13.0	3303.727	79.926	601.308	2.94%	26.80%
14.0	3169.491	82.857	684.164	3.05%	30.49%
15.0	3031.817	85.134	769.299	3.13%	34.28%
16.0	2897.581	86.882	856.181	3.20%	38.16%
17.0	2755.225	88.029	944.21	3.24%	42.08%
18.0	2624.354	88.698	1032.908	3.26%	46.03%
19.0	2475.048	88.719	1121.627	3.27%	49.99%
20.0	2335.033	88.038	1209.665	3.24%	53.91%
21.0	2177.681	86.653	1296.318	3.19%	57.77%
22.0	2041.543	84.787	1381.105	3.12%	61.55%
23.0	1887.848	82.449	1463.554	3.03%	65.22%
24.0	1734.446	79.196	1542.751	2.91%	68.75%
25.0	1550.495	74.692	1617.443	2.75%	72.08%
26.0	1380.590	69.189	1686.632	2.55%	75.17%
27.0	1225.483	63.758	1750.39	2.35%	78.01%
28.0	1112.366	59.189	1809.579	2.18%	80.65%
29.0	964.407	54.334	1863.913	2.00%	83.07%
30.0	822.461	48.245	1912.159	1.78%	85.22%
31.0	688.510	42.048	1954.207	1.55%	87.09%
32.0	570.038	36.056	1990.263	1.33%	88.70%
33.0	463.681	30.454	2020.716	1.12%	90.05%
34.0	367.038	25.140	2045.856	0.93%	91.18%
35.0	299.789	20.709	2066.566	0.76%	92.10%
36.0	249.701	17.496	2084.061	0.64%	92.88%
37.0	203.629	14.785	2098.847	0.54%	93.54%

$\gamma(^{\circ})$	Average I(cd)	Zonal F(lm)	Sum F(lm)	Eff Flux(%)	Eff Sum(%)
38.0	143.921	11.601	2110.447	0.43%	94.05%
39.0	115.297	8.848	2119.295	0.33%	94.45%
40.0	93.175	7.271	2126.566	0.27%	94.77%
41.0	78.647	6.119	2132.684	0.23%	95.04%
42.0	68.113	5.332	2138.016	0.20%	95.28%
43.0	60.732	4.773	2142.789	0.18%	95.50%
44.0	55.172	4.375	2147.164	0.16%	95.69%
45.0	51.002	4.080	2151.244	0.15%	95.87%
46.0	47.623	3.857	2155.101	0.14%	96.04%
47.0	44.879	3.679	2158.78	0.14%	96.21%
48.0	42.443	3.530	2162.31	0.13%	96.37%
49.0	40.271	3.397	2165.707	0.13%	96.52%
50.0	38.062	3.266	2168.973	0.12%	96.66%
51.0	36.269	3.145	2172.118	0.12%	96.80%
52.0	34.506	3.037	2175.155	0.11%	96.94%
53.0	32.795	2.928	2178.082	0.11%	97.07%
54.0	31.244	2.823	2180.905	0.10%	97.19%
55.0	29.817	2.726	2183.631	0.10%	97.32%
56.0	28.435	2.632	2186.263	0.10%	97.43%
57.0	27.096	2.539	2188.802	0.09%	97.55%
58.0	25.852	2.449	2191.25	0.09%	97.65%
59.0	24.682	2.363	2193.613	0.09%	97.76%
60.0	23.453	2.274	2195.887	0.08%	97.86%
61.0	22.268	2.182	2198.069	0.08%	97.96%
62.0	21.090	2.089	2200.158	0.08%	98.05%
63.0	19.949	1.996	2202.154	0.07%	98.14%
64.0	18.895	1.906	2204.06	0.07%	98.23%
65.0	18.091	1.830	2205.89	0.07%	98.31%
66.0	17.527	1.777	2207.668	0.07%	98.39%
67.0	17.140	1.743	2209.411	0.06%	98.46%
68.0	16.942	1.726	2211.137	0.06%	98.54%
69.0	16.920	1.728	2212.865	0.06%	98.62%
70.0	16.986	1.741	2214.606	0.06%	98.70%
71.0	17.074	1.760	2216.366	0.06%	98.77%
72.0	17.111	1.777	2218.144	0.07%	98.85%
73.0	17.059	1.787	2219.931	0.07%	98.93%
74.0	16.950	1.788	2221.719	0.07%	99.01%
75.0	16.672	1.776	2223.495	0.07%	99.09%

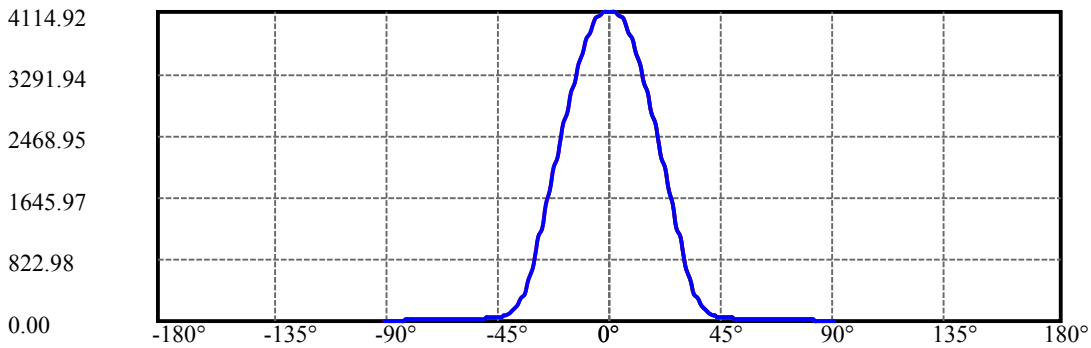
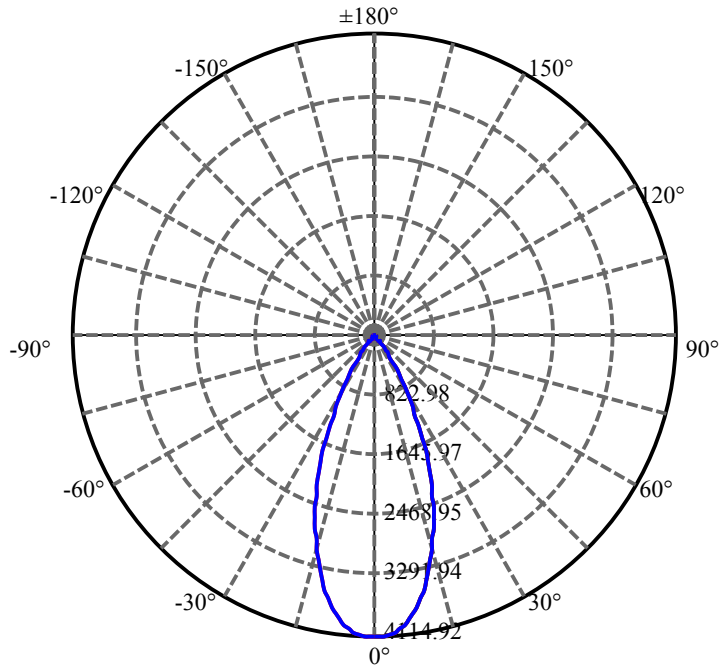
$\gamma(^{\circ})$	Average I(cd)	Zonal F(lm)	Sum F(lm)	Eff Flux(%)	Eff Sum(%)
76.0	16.401	1.756	2225.251	0.06%	99.17%
77.0	16.028	1.729	2226.98	0.06%	99.25%
78.0	15.348	1.680	2228.659	0.06%	99.32%
79.0	14.667	1.613	2230.272	0.06%	99.39%
80.0	13.745	1.532	2231.804	0.06%	99.46%
81.0	13.043	1.449	2233.252	0.05%	99.53%
82.0	12.495	1.385	2234.637	0.05%	99.59%
83.0	12.012	1.332	2235.969	0.05%	99.65%
84.0	11.448	1.278	2237.248	0.05%	99.70%
85.0	10.819	1.215	2238.463	0.04%	99.76%
86.0	10.249	1.152	2239.614	0.04%	99.81%
87.0	9.890	1.102	2240.717	0.04%	99.86%
88.0	9.678	1.072	2241.789	0.04%	99.91%
89.0	9.481	1.050	2242.839	0.04%	99.95%
90.0	9.407	1.036	2243.874	0.04%	100.00%

ZONAL LUMEN SUMMARY

Zone	Lumens	%Lamp	%Fixt
0-30	1912.16	70.38%	85.22%
0-40	2126.57	78.27%	94.77%
0-60	2195.89	80.82%	97.86%
0-90	2242.84	82.55%	99.95%
0-120	2242.84	82.55%	99.95%
0-180	2243.87	82.59%	100.00%
60-90	46.95	1.73%	2.09%
90-120	0.00	0.00%	0.00%
90-130	0.00	0.00%	0.00%
90-150	0.00	0.00%	0.00%
90-180	0.00	0.00%	0.00%
0-27.76	1795.10	66.07%	80.00%

ZONAL LUMEN SUMMARY

0-10	372.98
10-20	836.69
20-30	702.49
30-40	214.41
40-50	42.41
50-60	26.91
60-70	18.72
70-80	17.20
80-90	11.03
90-100	0.00
100-110	0.00
110-120	0.00
120-130	0.00
130-140	0.00
140-150	0.00
150-160	0.00
160-170	0.00
170-180	0.00



C0(Max): —————

C0/C180: —————

C90/C270: —————

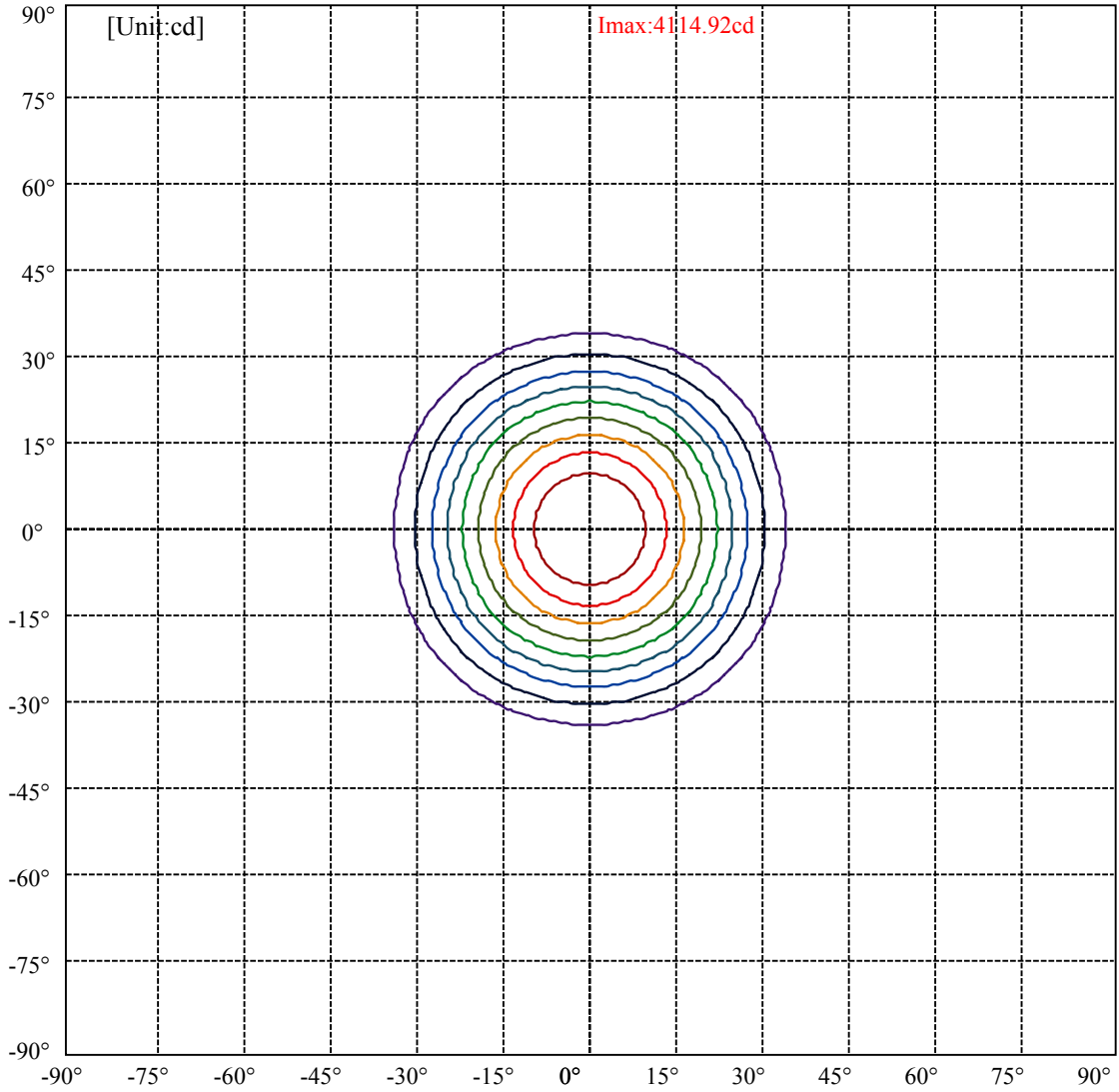
Field angle(10%Imax):C0/180Left:33.5 Right:33.5

:C90/270Left:33.5 Right:33.5

Beam Angle(50%Imax):C0/180Left:21.9 Right:21.9

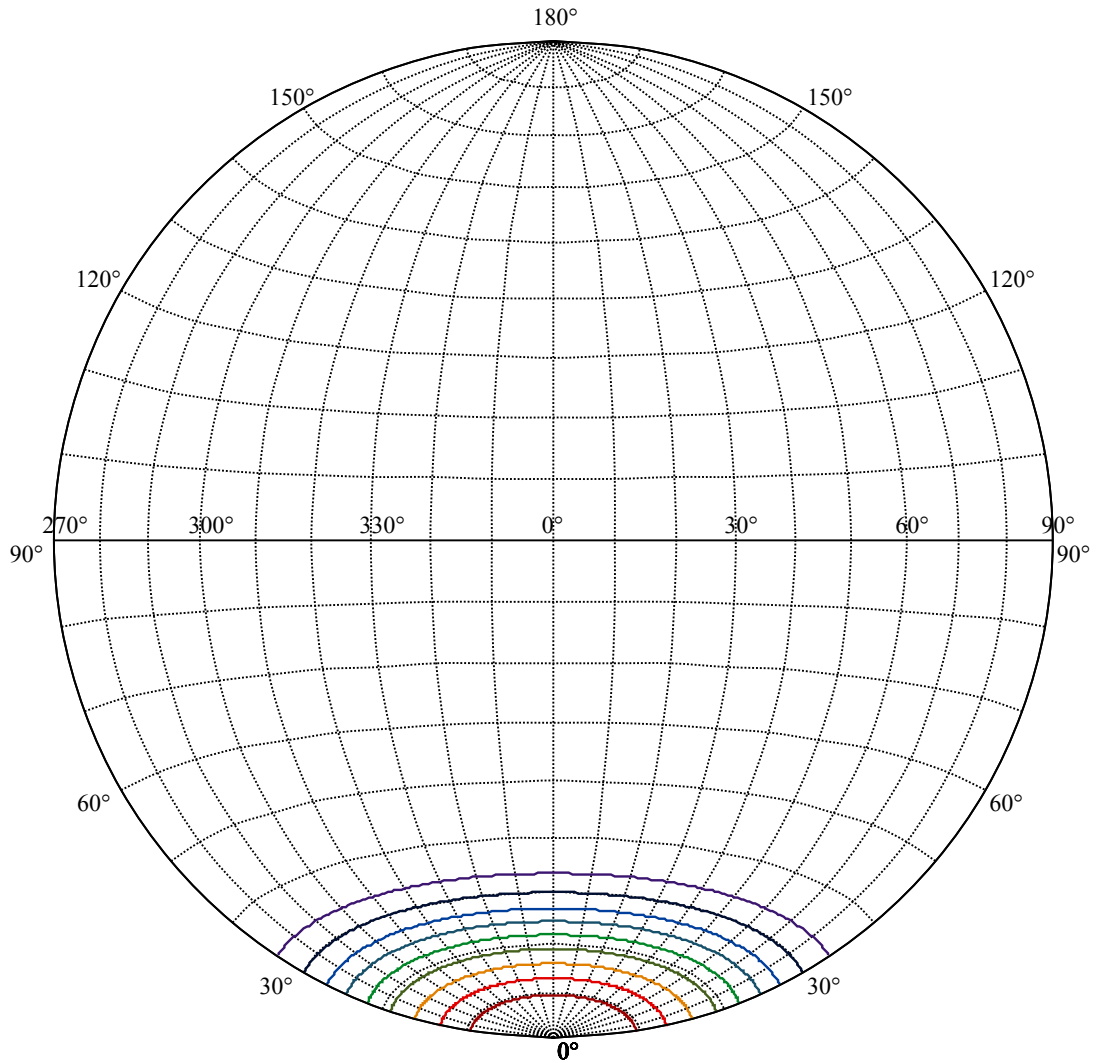
:C90/270Left:21.9 Right:21.9





(10%Imax) 411.492	—
(20%Imax) 822.984	—
(30%Imax) 1234.48	—
(40%Imax) 1645.97	—
(50%Imax) 2057.46	—
(60%Imax) 2468.95	—
(70%Imax) 2880.45	—
(80%Imax) 3291.94	—
(90%Imax) 3703.43	—





House

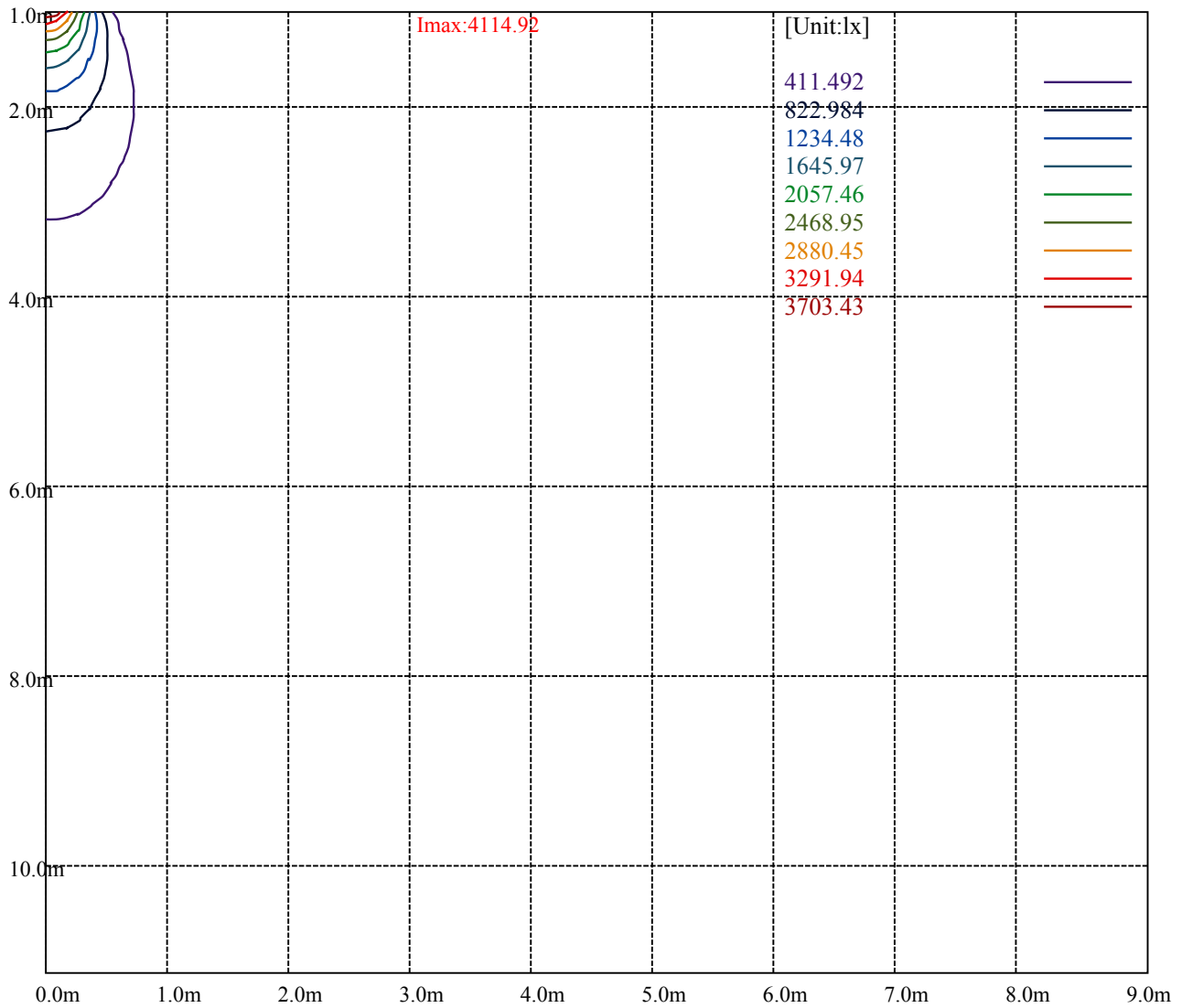
[Unit:cd]

Road

**Imax:4114.92**

(10%Imax) 411.492	—
(20%Imax) 822.984	—
(30%Imax) 1234.48	—
(40%Imax) 1645.97	—
(50%Imax) 2057.46	—
(60%Imax) 2468.95	—
(70%Imax) 2880.45	—
(80%Imax) 3291.94	—
(90%Imax) 3703.43	—





Luminance Table

$\gamma$	45	50	55	60	65	70	75	80	85
C0	0	0	0	0	0	0	0	0	0
C45	0	0	0	0	0	0	0	0	0
C90	0	0	0	0	0	0	0	0	0

L(Hor)(65)	L(Ver)(65)	L45(65)	L(Hor)(75)	L(Ver)(75)	L45(75)	L(Hor)(85)	L(Ver)(85)	L45(85)
0	0	0	0	0	0	0	0	0

Glare Table

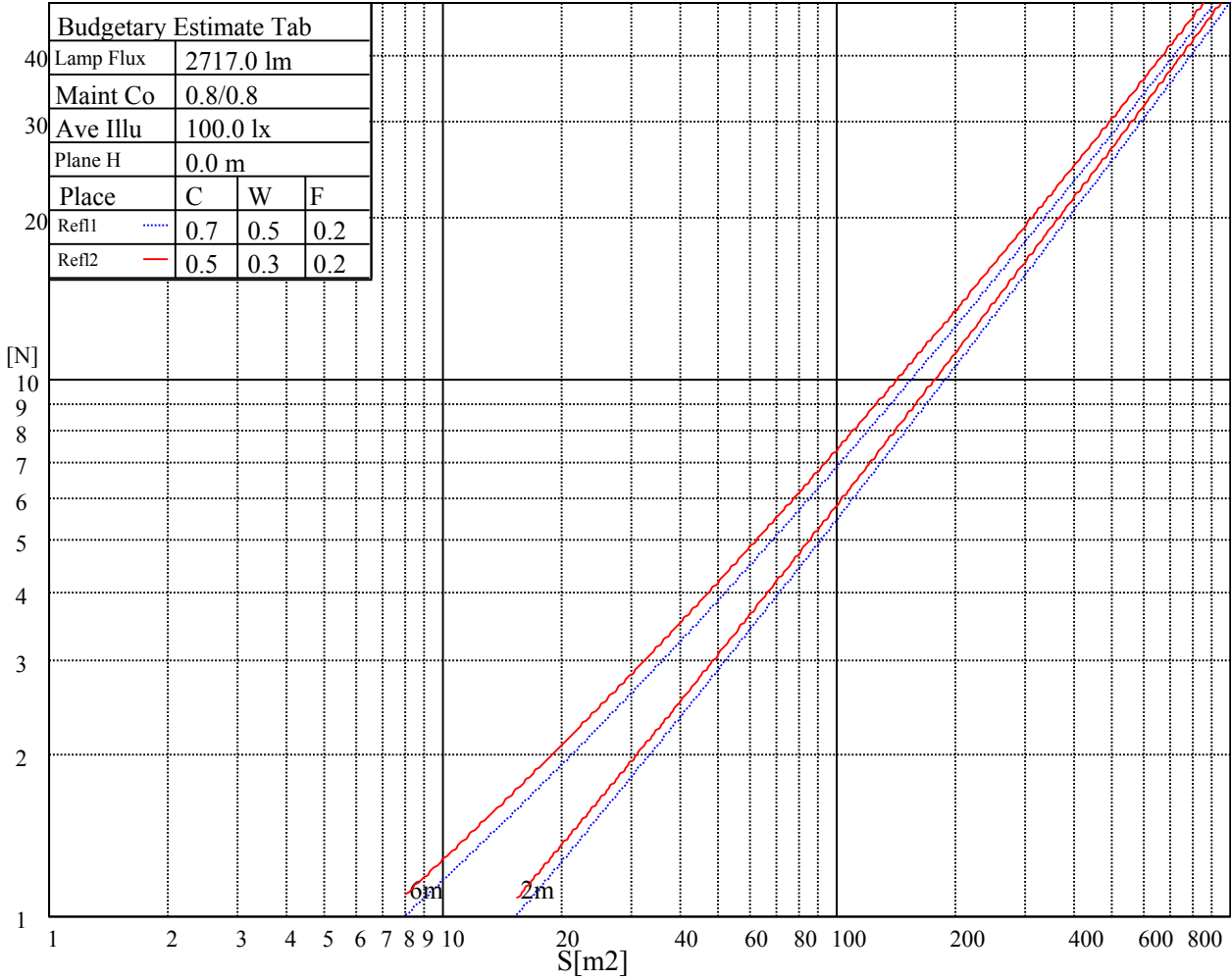
Glare	Quality	Service Values Illuminance(lx)							
1.15	A	2000	1000	500	<=300				
1.5	B		2000	1000	500	<=300			
1.85	C			2000	1000	500	<=300		
2.2	D				2000	1000	500	<=300	
2.55	E					2000	1000	500	<=300
		a	b	c	d	e	f	g	h

Luminance Limiting Curve

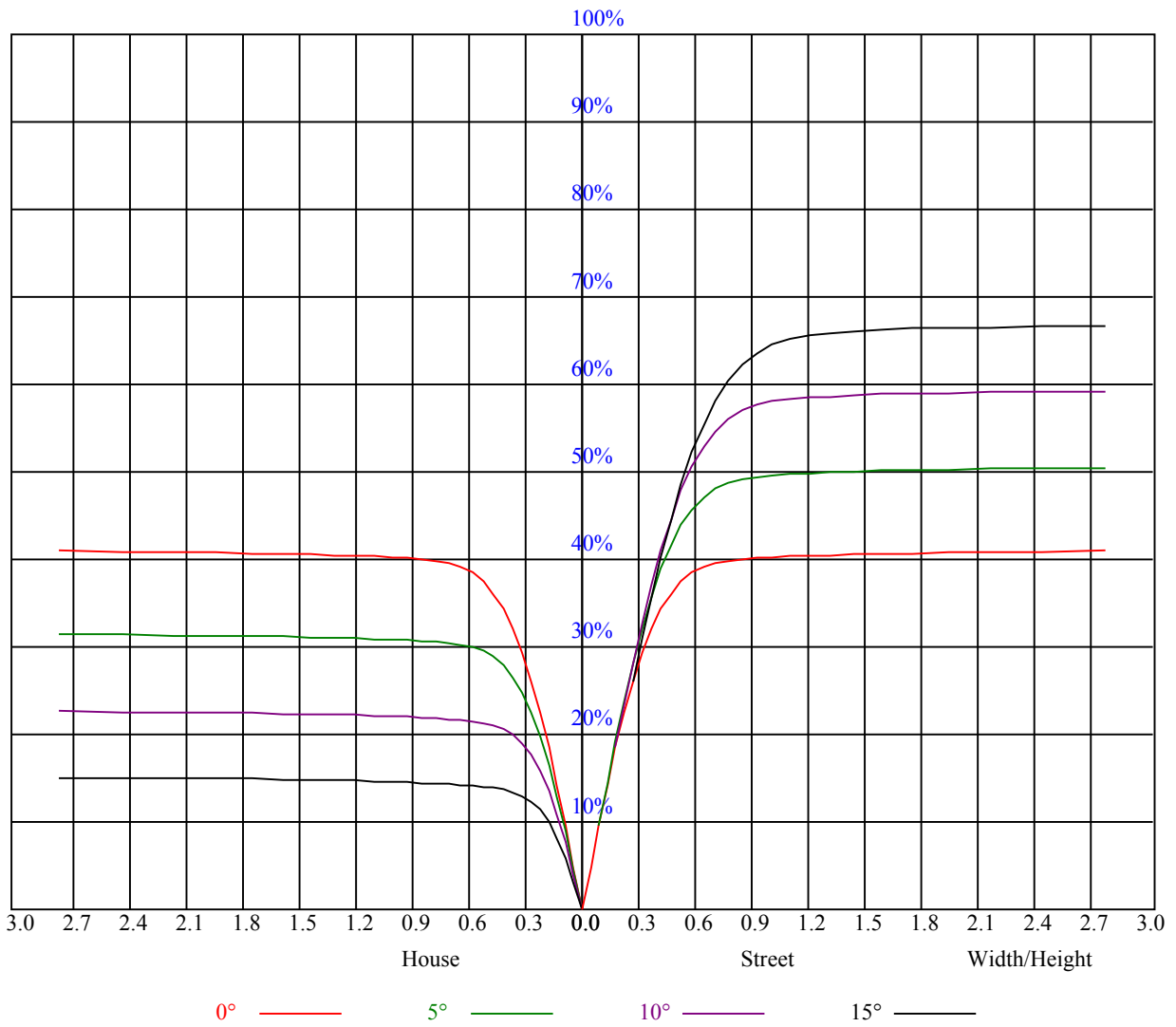


Illumination assessment according UGR											
Rf of Ceiling	70	70	50	50	30	70	70	50	50	30	
Rf of Wall	50	30	50	30	30	50	30	50	30	30	
Rf of Floor	20	20	20	20	20	20	20	20	20	20	
Room dimensions		Viewed crosswise					Viewed endwise				
X	Y										
2H	2H	非数字	非数字	非数字	非数字	非数字	非数字	非数字	非数字	非数字	
	3H	非数字	非数字	非数字	非数字	非数字	非数字	非数字	非数字	非数字	
	4H	非数字	非数字	非数字	非数字	非数字	非数字	非数字	非数字	非数字	
	6H	非数字	非数字	非数字	非数字	非数字	非数字	非数字	非数字	非数字	
	8H	非数字	非数字	非数字	非数字	非数字	非数字	非数字	非数字	非数字	
4H	12H	非数字	非数字	非数字	非数字	非数字	非数字	非数字	非数字	非数字	
	2H	非数字	非数字	非数字	非数字	非数字	非数字	非数字	非数字	非数字	
	3H	非数字	非数字	非数字	非数字	非数字	非数字	非数字	非数字	非数字	
	4H	非数字	非数字	非数字	非数字	非数字	非数字	非数字	非数字	非数字	
	6H	非数字	非数字	非数字	非数字	非数字	非数字	非数字	非数字	非数字	
8H	8H	非数字	非数字	非数字	非数字	非数字	非数字	非数字	非数字	非数字	
	12H	非数字	非数字	非数字	非数字	非数字	非数字	非数字	非数字	非数字	
	4H	非数字	非数字	非数字	非数字	非数字	非数字	非数字	非数字	非数字	
	6H	非数字	非数字	非数字	非数字	非数字	非数字	非数字	非数字	非数字	
	8H	非数字	非数字	非数字	非数字	非数字	非数字	非数字	非数字	非数字	
12H	12H	非数字	非数字	非数字	非数字	非数字	非数字	非数字	非数字	非数字	
	4H	非数字	非数字	非数字	非数字	非数字	非数字	非数字	非数字	非数字	
	6H	非数字	非数字	非数字	非数字	非数字	非数字	非数字	非数字	非数字	
8H	非数字	非数字	非数字	非数字	非数字	非数字	非数字	非数字	非数字		
Variation with the observer position at spacings:											
S = 1.0H	非数字/非数字					非数字/非数字					
S = 1.5H	非数字/非数字					非数字/非数字					
S = 2.0H	非数字/非数字					非数字/非数字					
Standard tables:	BK0					BK0					
Uncorrected UGR	负无穷大					负无穷大					

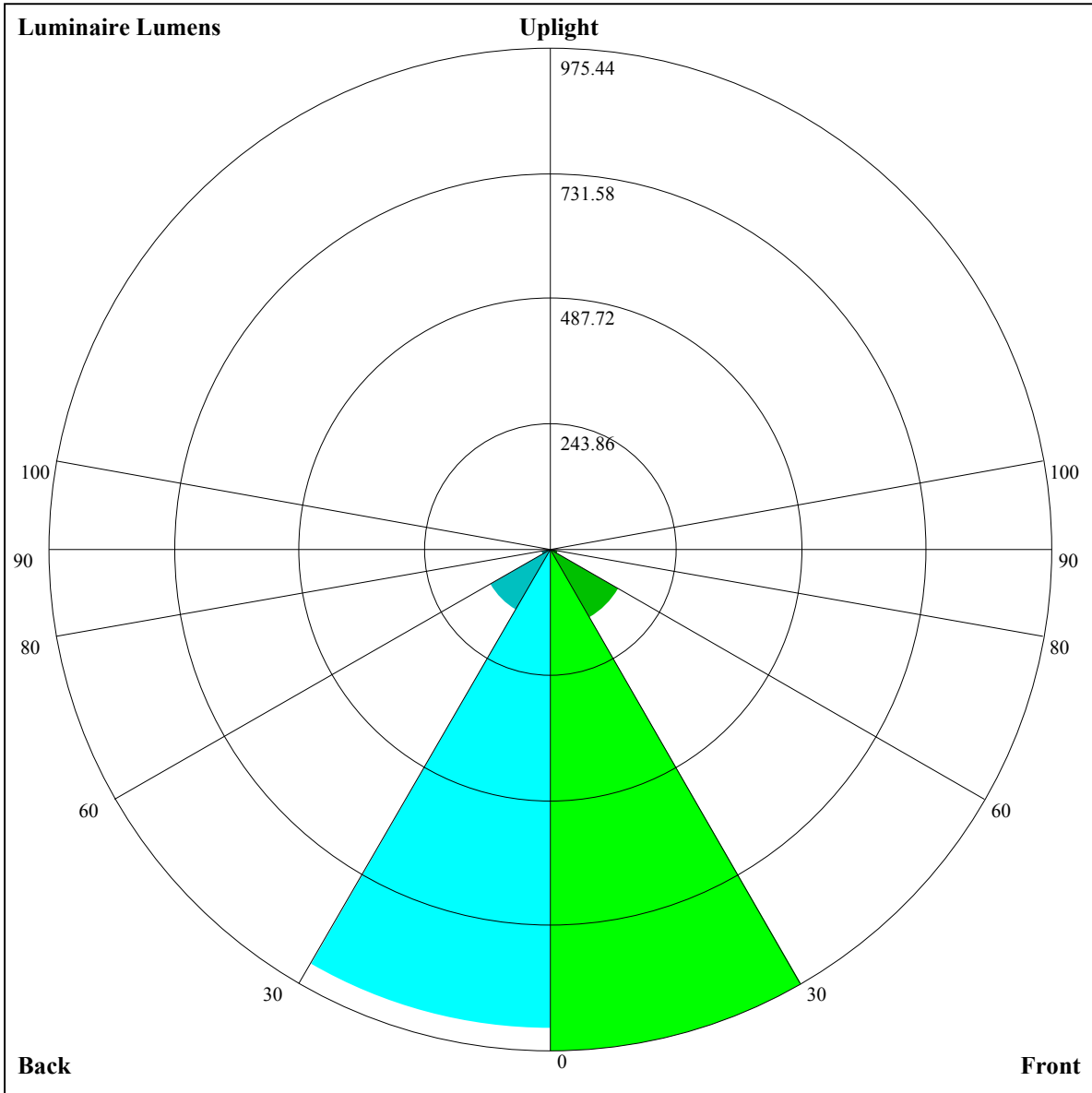
UGR calculation is based on CIE Publ. 117 ,S/H = 0.25



RHOCC	80			70			50			30			10			0
RHOW	50	30	10	50	30	10	50	30	10	50	30	10	50	30	10	0
RCR	COEFFICIENTS OF UTILIZATION RHOFC=20 CU															
0	0.98	0.98	0.98	0.96	0.96	0.96	0.92	0.92	0.92	0.88	0.88	0.88	0.84	0.84	0.84	0.83
1	0.92	0.90	0.88	0.90	0.88	0.87	0.87	0.85	0.84	0.84	0.82	0.81	0.81	0.80	0.79	0.78
2	0.86	0.83	0.80	0.85	0.82	0.79	0.82	0.80	0.78	0.80	0.78	0.76	0.77	0.76	0.74	0.73
3	0.81	0.77	0.74	0.80	0.76	0.74	0.78	0.75	0.72	0.76	0.73	0.71	0.74	0.72	0.70	0.69
4	0.77	0.72	0.69	0.76	0.72	0.69	0.74	0.71	0.68	0.72	0.69	0.67	0.71	0.68	0.66	0.65
5	0.73	0.68	0.65	0.72	0.68	0.65	0.70	0.67	0.64	0.69	0.66	0.64	0.68	0.65	0.63	0.62
6	0.69	0.64	0.61	0.68	0.64	0.61	0.67	0.63	0.61	0.66	0.63	0.60	0.65	0.62	0.60	0.59
7	0.66	0.61	0.58	0.65	0.61	0.58	0.64	0.60	0.58	0.63	0.60	0.57	0.62	0.59	0.57	0.56
8	0.63	0.58	0.55	0.62	0.58	0.55	0.61	0.57	0.55	0.60	0.57	0.55	0.60	0.57	0.54	0.53
9	0.60	0.55	0.53	0.59	0.55	0.52	0.59	0.55	0.52	0.58	0.55	0.52	0.57	0.54	0.52	0.51
10	0.57	0.53	0.50	0.57	0.53	0.50	0.56	0.52	0.50	0.56	0.52	0.50	0.55	0.52	0.50	0.49







Luminaire Lumens:

FL=975.44,FM=151.76,FH=16.96,FVH=6.07

BL=933.77,BM=135.56,BH=18.43,BVH=6.03

UL=0,UH=0

BUG Rating:B2-U0-G0

Intensity data(cd)

C/γ(°)	0.0	1.0	2.0	3.0	4.0	5.0	6.0	7.0	8.0
0.0	4118.87	4116.53	4110.68	4098.39	4072.05	4044.55	4004.17	3955.01	3882.44
45.0	4117.70	4120.04	4121.80	4112.43	4096.63	4072.05	4041.04	3983.10	3924.58
90.0	4118.29	4119.46	4109.51	4093.71	4066.79	4017.63	3957.35	3873.66	3794.66
135.0	4104.83	4107.17	4109.51	4099.56	4076.74	4036.94	3989.54	3926.92	3836.21
180.0	4118.87	4116.53	4113.61	4097.22	4067.37	4033.43	3968.47	3900.00	3823.92
225.0	4117.70	4111.26	4094.29	4063.86	4028.75	3977.25	3893.56	3816.90	3734.38
270.0	4118.29	4115.36	4106.00	4098.97	4077.91	4052.74	4011.78	3946.82	3890.05
315.0	4104.83	4103.66	4096.63	4086.10	4065.03	4033.43	3979.59	3923.99	3856.11
360.0	4118.87	4116.53	4110.68	4098.39	4072.05	4044.55	4004.17	3955.01	3882.44
C/γ(°)	9.0	10.0	11.0	12.0	13.0	14.0	15.0	16.0	17.0
0.0	3813.97	3734.38	3641.91	3510.24	3390.27	3268.54	3111.70	2982.95	2825.52
45.0	3856.11	3781.78	3673.52	3572.27	3465.18	3341.69	3186.02	3058.44	2902.19
90.0	3704.53	3580.47	3469.27	3351.06	3191.88	3062.54	2936.72	2808.55	2680.97
135.0	3750.77	3655.37	3550.62	3408.41	3285.51	3157.35	3026.26	2866.49	2740.67
180.0	3739.65	3620.85	3510.82	3387.34	3264.44	3102.92	2971.25	2844.84	2689.17
225.0	3638.99	3508.48	3396.12	3281.42	3159.69	3001.09	2881.71	2757.05	2597.29
270.0	3819.24	3713.31	3616.75	3510.24	3363.93	3239.86	3114.63	2961.88	2831.96
315.0	3777.69	3667.08	3567.59	3428.31	3308.92	3181.93	3026.26	2900.43	2774.03
360.0	3813.97	3734.38	3641.91	3510.24	3390.27	3268.54	3111.70	2982.95	2825.52
C/γ(°)	18.0	19.0	20.0	21.0	22.0	23.0	24.0	25.0	26.0
0.0	2703.80	2572.71	2438.69	2267.81	2126.77	1985.14	1842.93	1663.27	1520.47
45.0	2776.95	2650.54	2487.26	2349.15	2211.04	2072.93	1899.11	1759.24	1615.86
90.0	2518.87	2381.34	2239.71	2068.83	1931.30	1787.92	1608.26	1466.05	1142.07
135.0	2613.67	2451.57	2320.48	2146.66	2011.48	1875.70	1735.84	1560.85	1412.79
180.0	2558.66	2386.02	2246.15	2101.60	1974.02	1787.92	1655.07	1502.33	1363.05
225.0	2463.86	2289.46	2149.00	2007.38	1868.10	1694.28	1551.49	1154.36	1154.36
270.0	2711.41	2585.00	2450.40	2271.32	2139.64	1999.19	1821.28	1676.73	1502.92
315.0	2647.62	2483.75	2348.57	2208.70	2070.00	1899.70	1761.59	1621.13	1333.20
360.0	2703.80	2572.71	2438.69	2267.81	2126.77	1985.14	1842.93	1663.27	1520.47
C/γ(°)	27.0	28.0	29.0	30.0	31.0	32.0	33.0	34.0	35.0
0.0	1151.31	1151.31	1046.97	907.16	744.41	627.83	518.51	398.42	319.53
45.0	1469.56	1280.53	1138.32	996.70	828.15	705.25	592.31	462.97	374.60
90.0	1142.07	999.74	865.02	710.35	596.05	491.88	399.77	304.38	244.21
135.0	1264.14	1119.01	942.27	810.60	688.87	551.34	451.85	366.41	295.01
180.0	1186.89	1038.25	902.48	736.86	622.15	516.81	400.35	324.86	307.89
225.0	1083.13	944.38	810.71	689.28	552.63	454.13	369.34	284.13	229.76
270.0	1353.68	1212.64	1034.74	889.02	762.02	642.05	509.20	414.98	337.15
315.0	1153.07	1153.07	974.75	839.74	713.80	571.00	468.12	380.16	290.15
360.0	1151.31	1151.31	1046.97	907.16	744.41	627.83	518.51	398.42	319.53
C/γ(°)	36.0	37.0	38.0	39.0	40.0	41.0	42.0	43.0	44.0
0.0	255.86	204.48	154.73	124.36	102.59	86.09	71.87	64.02	58.17
45.0	301.45	301.45	178.55	142.85	110.67	92.70	79.42	69.47	60.63
90.0	195.99	157.72	127.99	100.37	85.21	71.34	63.15	57.18	51.91
135.0	295.01	175.86	132.90	107.39	89.25	73.97	65.49	59.11	54.31
180.0	237.13	158.30	128.34	99.90	84.21	72.68	64.78	57.70	53.49
225.0	175.10	140.86	114.41	94.05	76.61	67.42	60.75	56.01	51.27
270.0	303.79	303.79	165.09	133.20	103.06	85.79	70.75	62.74	57.06
315.0	233.27	186.57	149.35	120.26	93.81	79.18	68.71	59.63	54.54
360.0	255.86	204.48	154.73	124.36	102.59	86.09	71.87	64.02	58.17

Intensity data(cd)

C/γ(°)	45.0	46.0	47.0	48.0	49.0	50.0	51.0	52.0	53.0
0.0	52.61	49.16	45.71	43.37	41.20	38.74	37.04	35.41	33.77
45.0	55.42	51.56	48.40	45.18	42.90	40.15	38.22	36.40	34.18
90.0	48.81	46.06	43.07	40.97	39.09	37.28	35.17	33.59	32.13
135.0	49.74	46.94	44.42	42.14	39.62	37.75	36.05	34.00	32.48
180.0	50.10	46.64	44.30	42.08	40.09	37.81	36.11	34.47	32.48
225.0	48.22	45.59	43.31	40.61	38.74	36.58	34.88	33.30	31.54
270.0	52.61	48.34	45.65	43.31	41.14	38.68	36.93	35.23	33.59
315.0	50.50	46.70	44.18	41.90	39.39	37.51	35.76	33.65	32.19
360.0	52.61	49.16	45.71	43.37	41.20	38.74	37.04	35.41	33.77
C/γ(°)	54.0	55.0	56.0	57.0	58.0	59.0	60.0	61.0	62.0
0.0	31.89	30.49	29.09	27.86	26.39	25.28	24.17	22.77	21.71
45.0	32.66	31.37	30.02	28.44	27.21	26.04	24.99	23.53	22.30
90.0	30.78	29.09	27.74	26.22	25.05	23.88	22.53	21.54	20.48
135.0	30.84	29.55	28.21	26.98	25.52	24.35	23.29	22.18	20.95
180.0	31.02	29.26	28.03	26.86	25.81	24.76	23.41	22.30	21.24
225.0	30.20	28.91	27.39	26.22	25.11	23.94	22.53	21.42	20.37
270.0	31.84	30.49	29.20	27.62	26.34	24.93	23.76	22.59	21.24
315.0	30.72	29.38	27.80	26.57	25.40	24.29	22.94	21.83	20.42
360.0	31.89	30.49	29.09	27.86	26.39	25.28	24.17	22.77	21.71
C/γ(°)	63.0	64.0	65.0	66.0	67.0	68.0	69.0	70.0	71.0
0.0	20.37	19.31	18.32	17.56	16.85	16.39	16.04	15.80	15.80
45.0	21.30	20.01	18.90	18.02	17.26	16.85	16.62	16.85	17.32
90.0	19.14	18.20	17.56	17.09	16.62	16.15	15.80	15.51	15.16
135.0	19.96	18.96	18.20	17.44	17.09	16.80	16.97	17.62	18.67
180.0	19.96	18.90	18.26	17.79	17.50	17.44	17.56	18.02	18.73
225.0	19.31	18.32	18.14	18.26	18.90	19.84	21.13	21.42	20.95
270.0	20.19	19.14	18.08	17.38	16.68	16.27	15.86	15.57	15.16
315.0	19.37	18.32	17.26	16.68	16.21	15.80	15.39	15.10	14.81
360.0	20.37	19.31	18.32	17.56	16.85	16.39	16.04	15.80	15.80
C/γ(°)	72.0	73.0	74.0	75.0	76.0	77.0	78.0	79.0	80.0
0.0	15.80	15.68	15.39	15.04	14.69	14.28	13.93	13.58	13.23
45.0	17.26	16.80	16.27	15.80	15.45	14.81	14.10	13.69	13.46
90.0	14.92	14.63	14.34	14.10	13.87	13.69	13.46	13.23	12.93
135.0	19.37	19.84	20.19	20.37	20.37	20.07	18.38	17.15	15.68
180.0	19.49	19.90	20.48	20.66	20.07	19.96	18.61	17.79	15.27
225.0	20.54	20.78	20.54	19.37	19.20	18.26	17.50	15.51	13.34
270.0	14.92	14.63	14.34	14.16	13.93	13.75	13.58	13.40	13.23
315.0	14.57	14.22	14.05	13.87	13.64	13.40	13.23	12.99	12.82
360.0	15.80	15.68	15.39	15.04	14.69	14.28	13.93	13.58	13.23
C/γ(°)	81.0	82.0	83.0	84.0	85.0	86.0	87.0	88.0	89.0
0.0	12.99	12.70	12.35	11.70	11.24	10.59	10.01	9.71	9.60
45.0	13.23	12.99	12.47	12.06	11.53	10.89	10.30	9.95	9.71
90.0	12.70	12.23	11.82	11.18	10.65	10.12	9.95	9.66	9.42
135.0	13.87	12.52	11.94	11.41	10.77	10.12	9.83	9.66	9.31
180.0	13.28	12.35	11.82	11.12	10.36	9.89	9.71	9.77	9.71
225.0	12.70	12.11	11.47	10.83	10.12	9.77	9.66	9.36	9.36
270.0	13.05	12.76	12.35	11.88	11.18	10.42	9.89	9.71	9.42
315.0	12.52	12.29	11.88	11.41	10.71	10.18	9.77	9.60	9.31
360.0	12.99	12.70	12.35	11.70	11.24	10.59	10.01	9.71	9.60

Intensity data(cd)

C/γ(°)	90.0
0.0	9.42
45.0	9.42
90.0	9.48
135.0	9.42
180.0	9.42
225.0	9.42
270.0	9.36
315.0	9.31
360.0	9.42